

professional perfection **one800**® **ILLUMINA**™
DARTBOARD LIGHTING SYSTEM



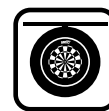
Minimum Shadow



Natural Daylight Effect



Easy And Quick To Assemble



Clear Vision



Hi-Tech Optical Lens

The ILLUMINA provides clear vision and reduces the shadow effect during play to a minimum. Easy and Quick to Assemble.

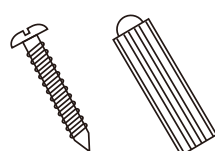
Patented optical lens for perfect light distribution on dartboard surface and Comfortable 4000k natural light to reduce reflection and protect the eyes.

1. PACKAGE INCLUDES

Nut X6



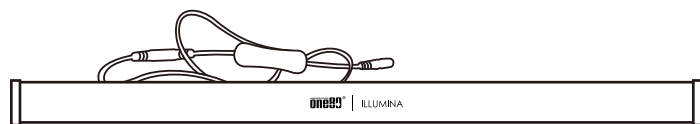
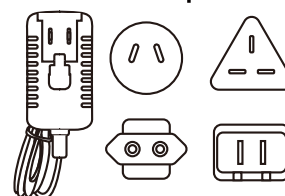
Tapping Screws and Wall Anchor X4



Dartboard Pads X3



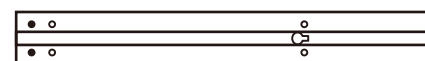
Universal Adapter X1



Light with button X1

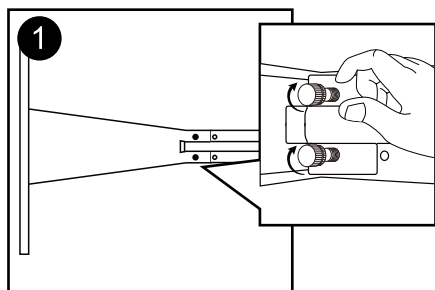


Horizontal Frame X1

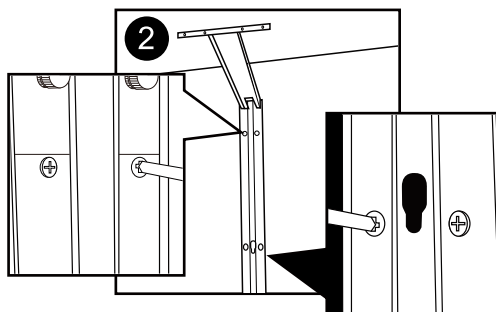


Vertical Frame X1

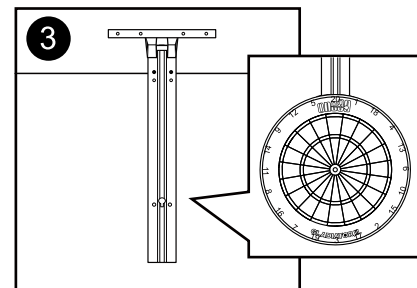
2. ASSEMBLY STEPS



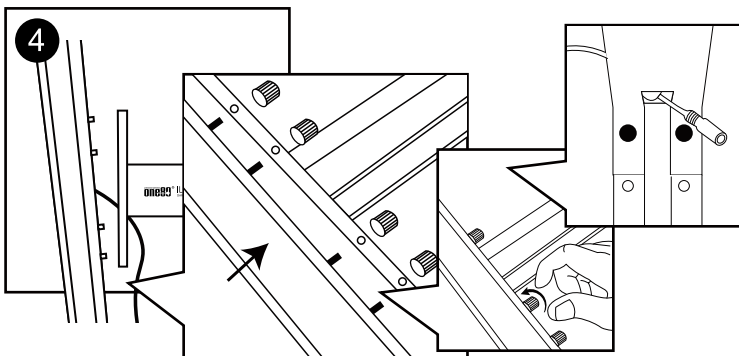
1. Connect the Horizontal Frame with Vertical Frame with 2 nuts



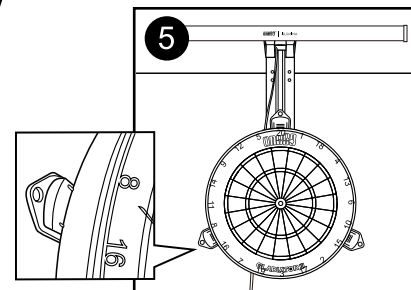
2. Replace the previous hanging bracket with the Vertical Frame, using the same holes and the new Tapping Screws to fix the Vertical Frame to the wall. Suggest that the top of the Vertical Frame should also be fixed to the wall for safety and better performance.



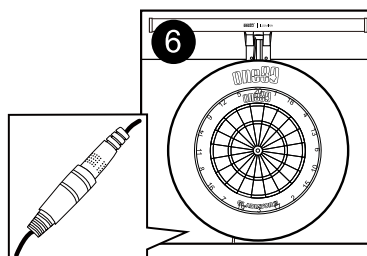
3. Put up the dartboard



4. Connect the light with Horizontal Frame with 4 nuts, insert the cable through the hole at the end of the frame and place it underneath the dartboard.



5. Insert three pads to stabilize the board.



6. Put on dartboard surround, connect the cable with adapter and choose the right plug for your region. Power on and you can enjoy playing with our ILLUMINA Lighting System.